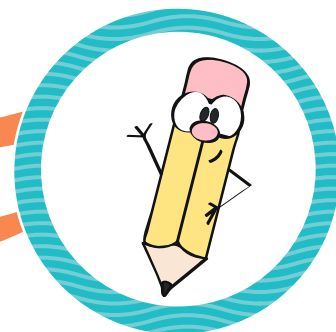


Name: \_\_\_\_\_

# subtraction → Watermelons



Subtract the numbers inside each watermelon and circle the ones that match up to the number on the top.

15

20-5

11-2

19-4

10-1

17

14-2

18-1

16-3

19-2

19

20-1

18-5

16-3

19-0

16

18-1

17-5

17-1

19-3

14

16-2

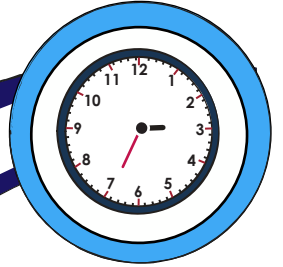
19-1

15-1

18-2

Name: \_\_\_\_\_

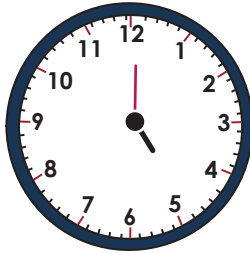
# What's The Time?



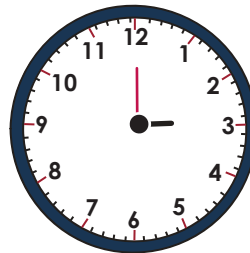
Write the correct time under each clock in the first section. The first one has been done for you.



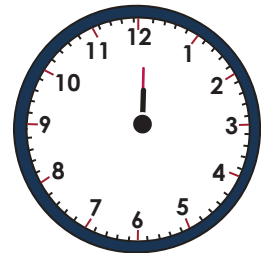
8:00



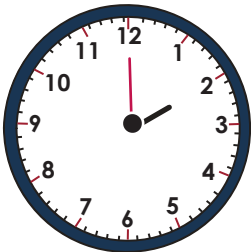
— — —



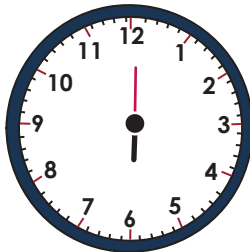
— — —



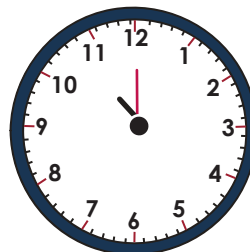
— — —



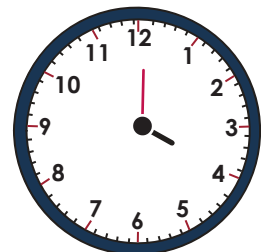
— — —



— — —

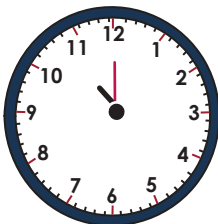


— — —

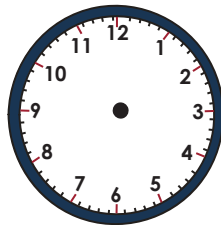


— — —

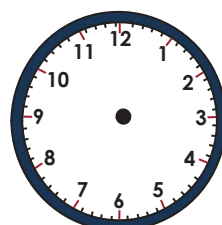
Fill in the hands on the analog clock faces to match the digital time shown. The first one has been done for you.



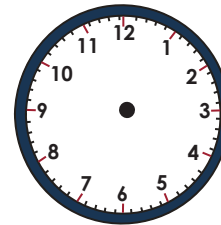
11:00



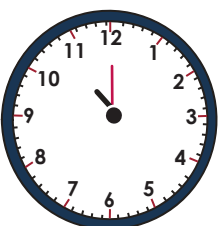
1:00



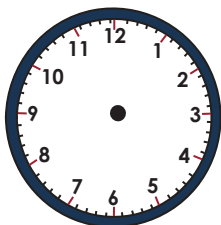
6:00



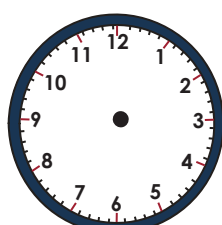
4:00



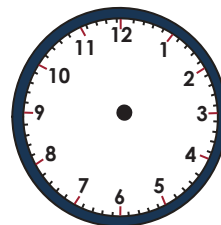
2:00



12:00



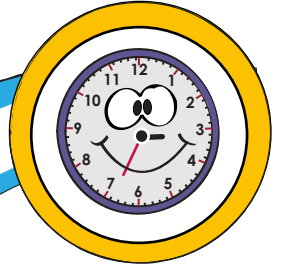
3:00



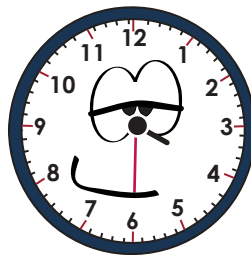
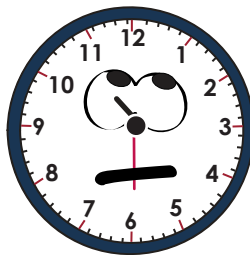
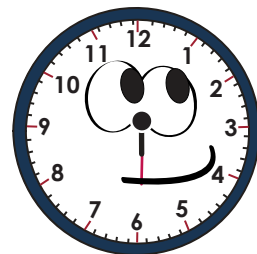
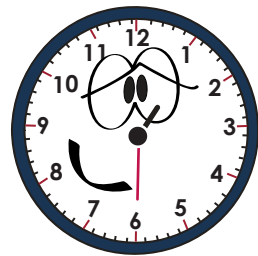
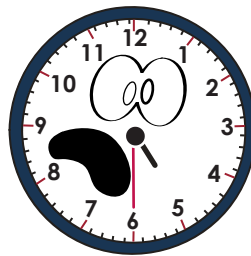
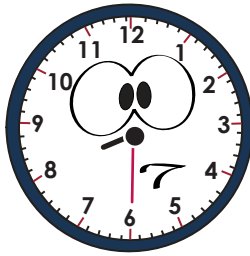
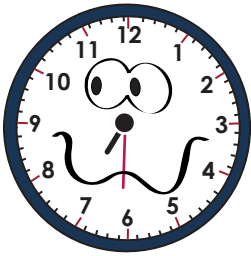
5:00

Name: \_\_\_\_\_

# Funny clock Faces

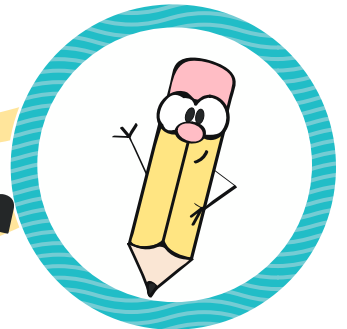


Write the time each clock shows on the lines below each clock.



Name: \_\_\_\_\_

# Ordering by Length



Number each set of three items from 1 to 3, 1 being the shortest and 3 being the longest.

