

# ROMANIA

(ROMÂNIA)

People from all over the world decorate Easter eggs, but in Romania's northern region of **Bukovina**, this tradition has evolved into an art form. Women of this region exquisitely hand-paint the eggs with traditional designs in red, black and yellow, using bees wax and natural dyes.

STICK THE  
ROMANIAN  
FLAG HERE

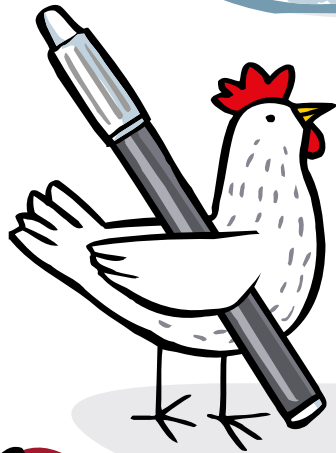
CLUCK. CLUCK  
CLUCK. RED!



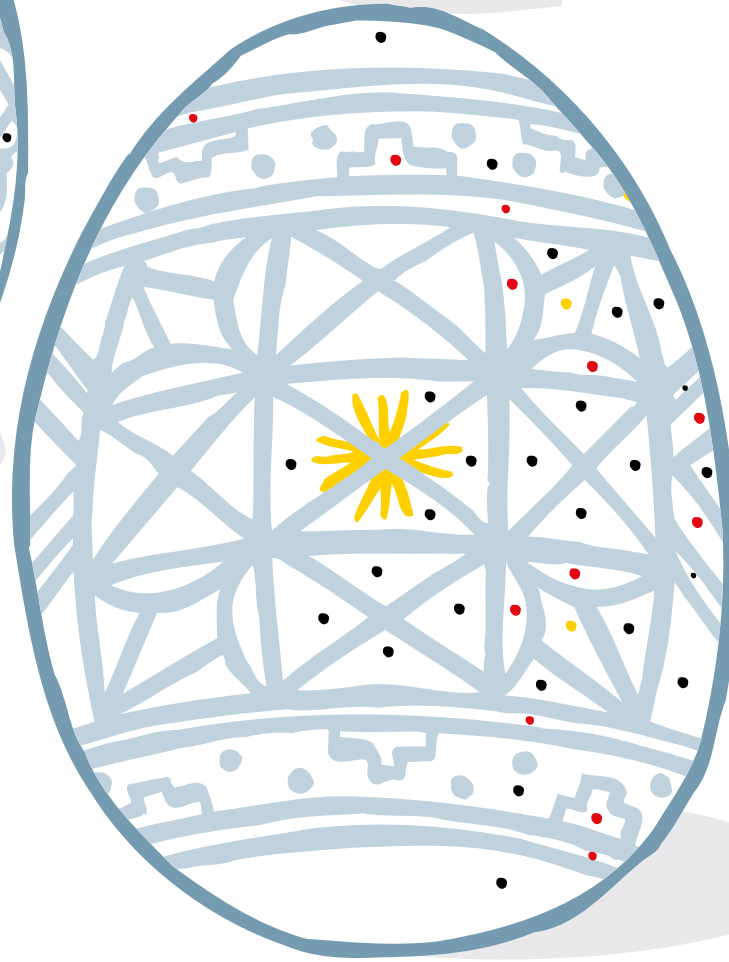
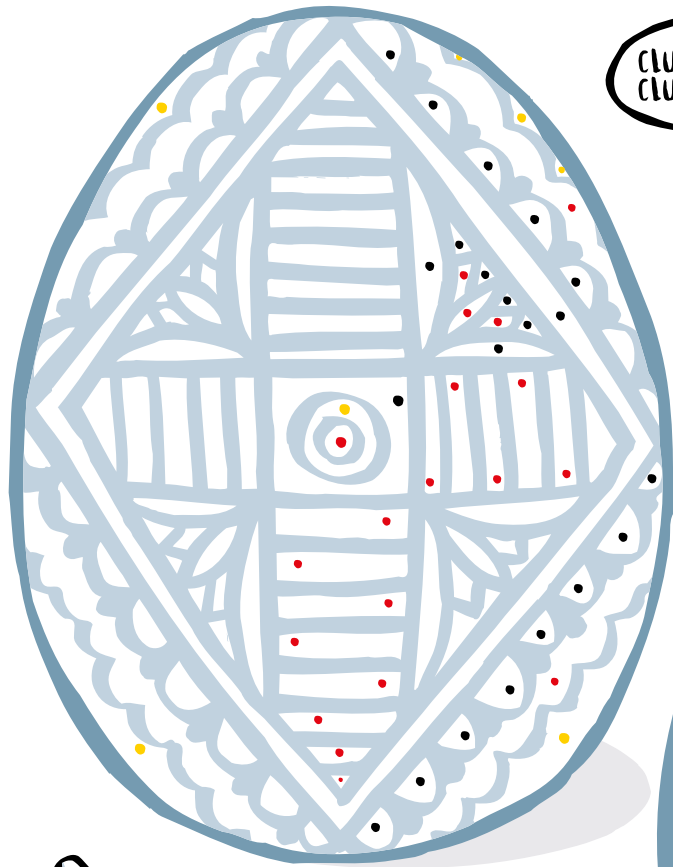
CLUCK. CLUCK  
CLUCK. YELLOW!



CLUCK. CLUCK  
CLUCK. BLACK!



Colour the Easter eggs following the indicated colour code, in yellow, red and black.

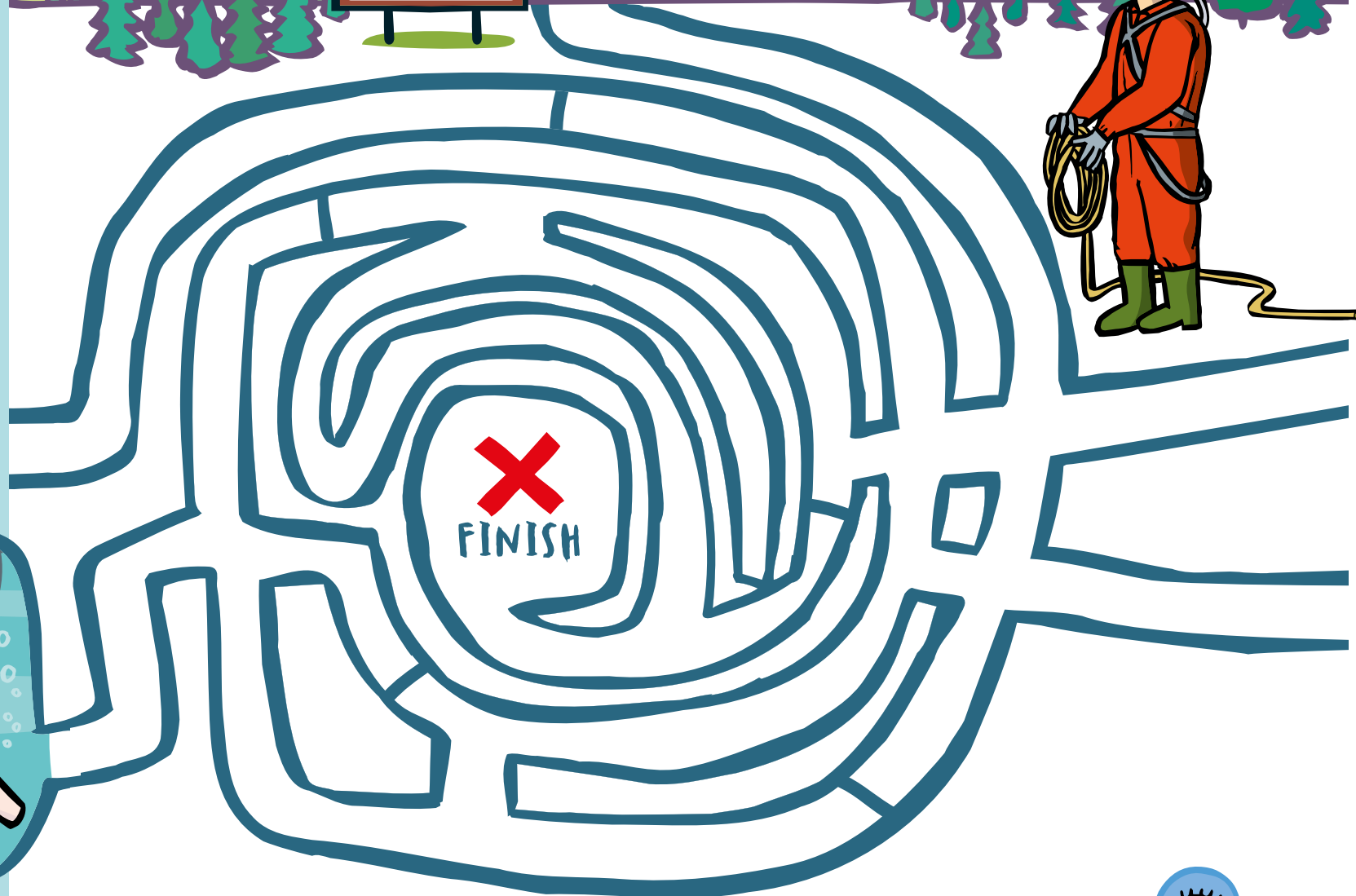


# SLOVENIA

(SLOVENIJA)

Just where the Alps meet the Adriatic, Slovenia is home to some rare animals. In its forests live brown bears that have almost disappeared elsewhere; and in the waters of its dark underground caves lives the **proteus** or 'human fish'— once thought to be “a baby dragon” — one of the weirdest animals in Europe.

STICK THE  
SLOVENIAN  
FLAG HERE



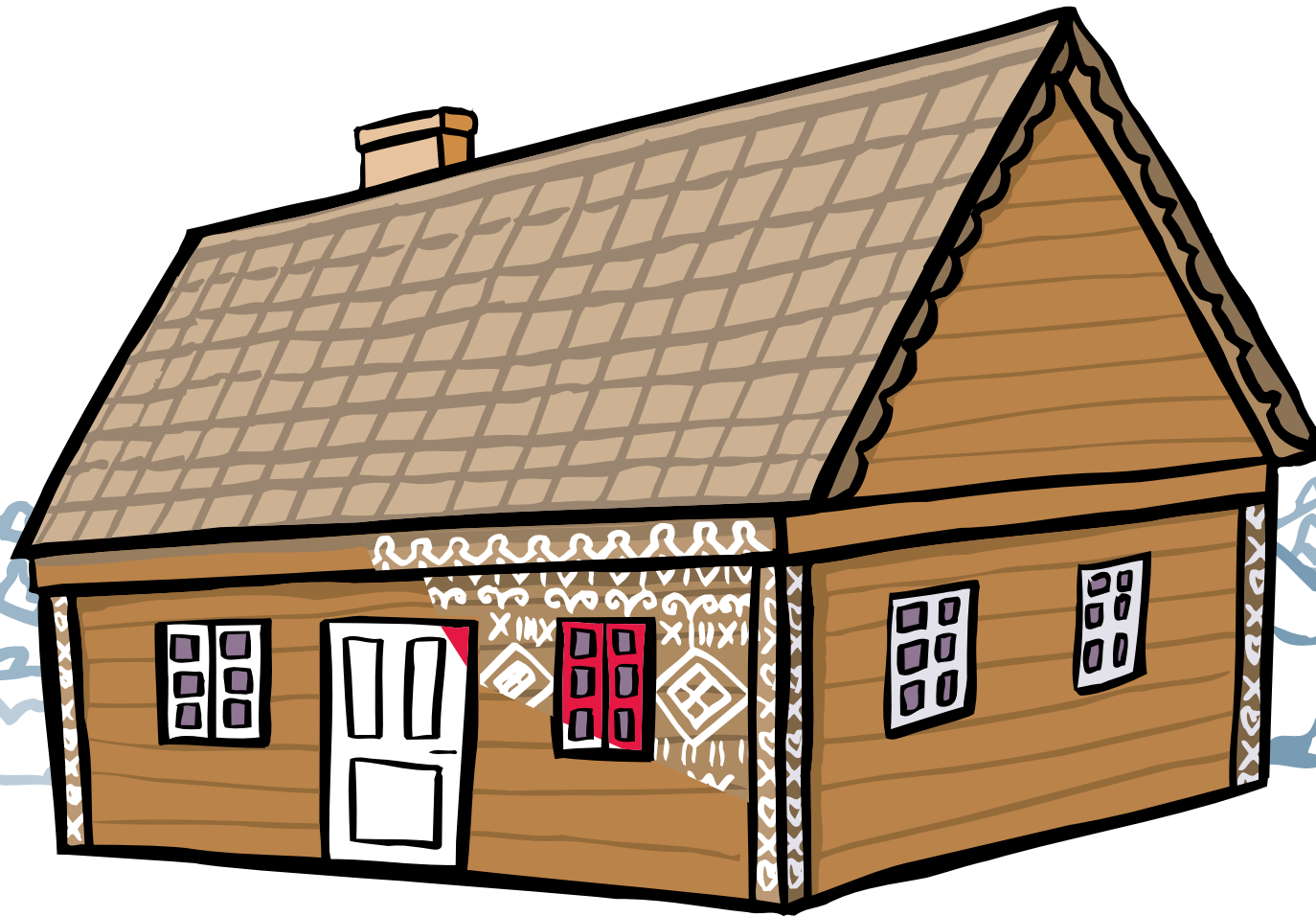
Find the route for proteus to the centre of the cave.



# SLOVAKIA

(SLOVENSKO)

The log houses in the village of **Čičmany**, in Slovakia are beautifully decorated with white geometrical patterns painted with lime. They embroider the same motifs on their clothes, shoes, tools etc.



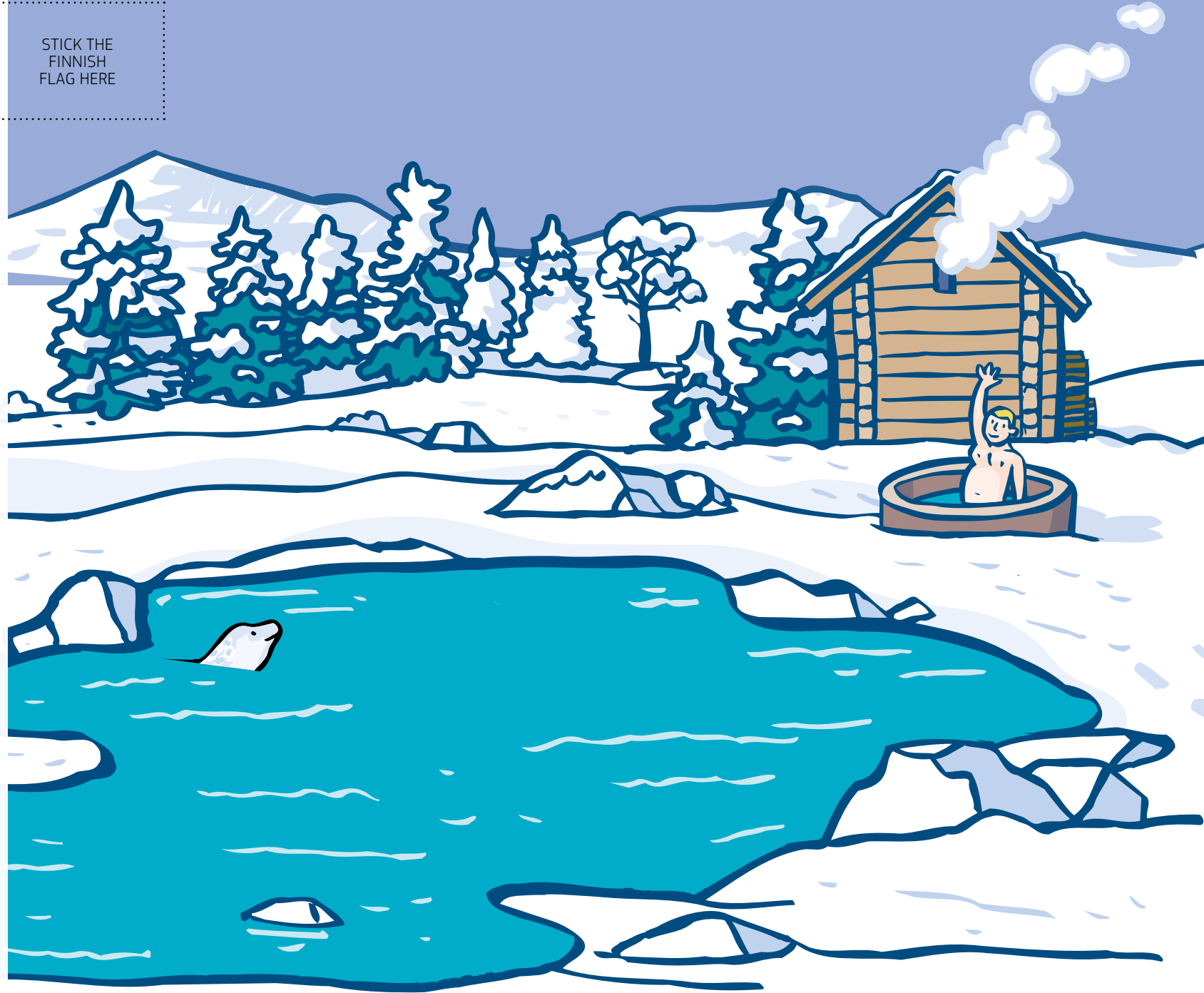
Cut and paste the pieces to help this lady finish decorating her house.

# FINLAND

(SUOMI)

STICK THE  
FINNISH  
FLAG HERE

Finland and Sweden, to the far north of our continent, are countries of vast green forests, beautiful islands, windswept arctic fells and countless blue lakes. The pristine and picturesque landscapes of Finland provide habitat for many wild animals, like the ringed **Saimaa seal**, the only seal on the planet that has adapted to live in fresh water.

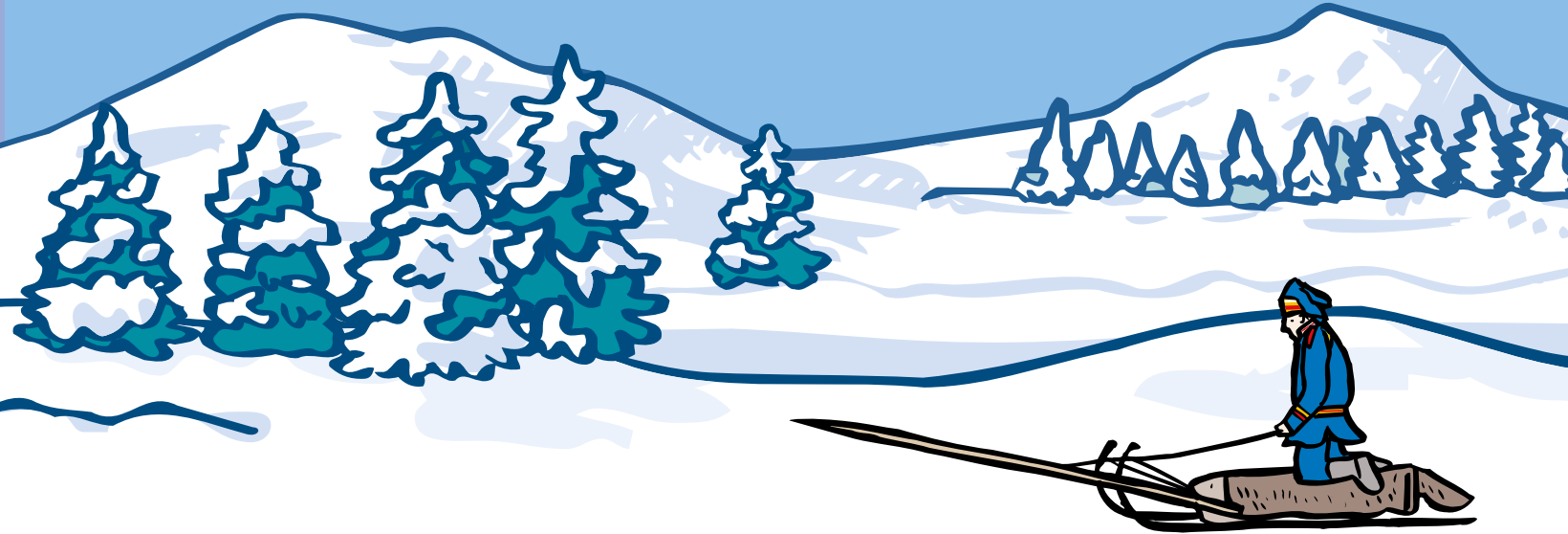


STICK THE  
SWEDISH  
FLAG HERE

# SWEDEN

(SVERIGE)

Like its Nordic neighbour, Sweden is a beautiful country for lovers of wild nature. Swedes particularly take pride in the **moose** as an important national symbol of the Swedish landscape. But be careful not to get in the way of a moose, it may be dangerous for you ... and for the moose!

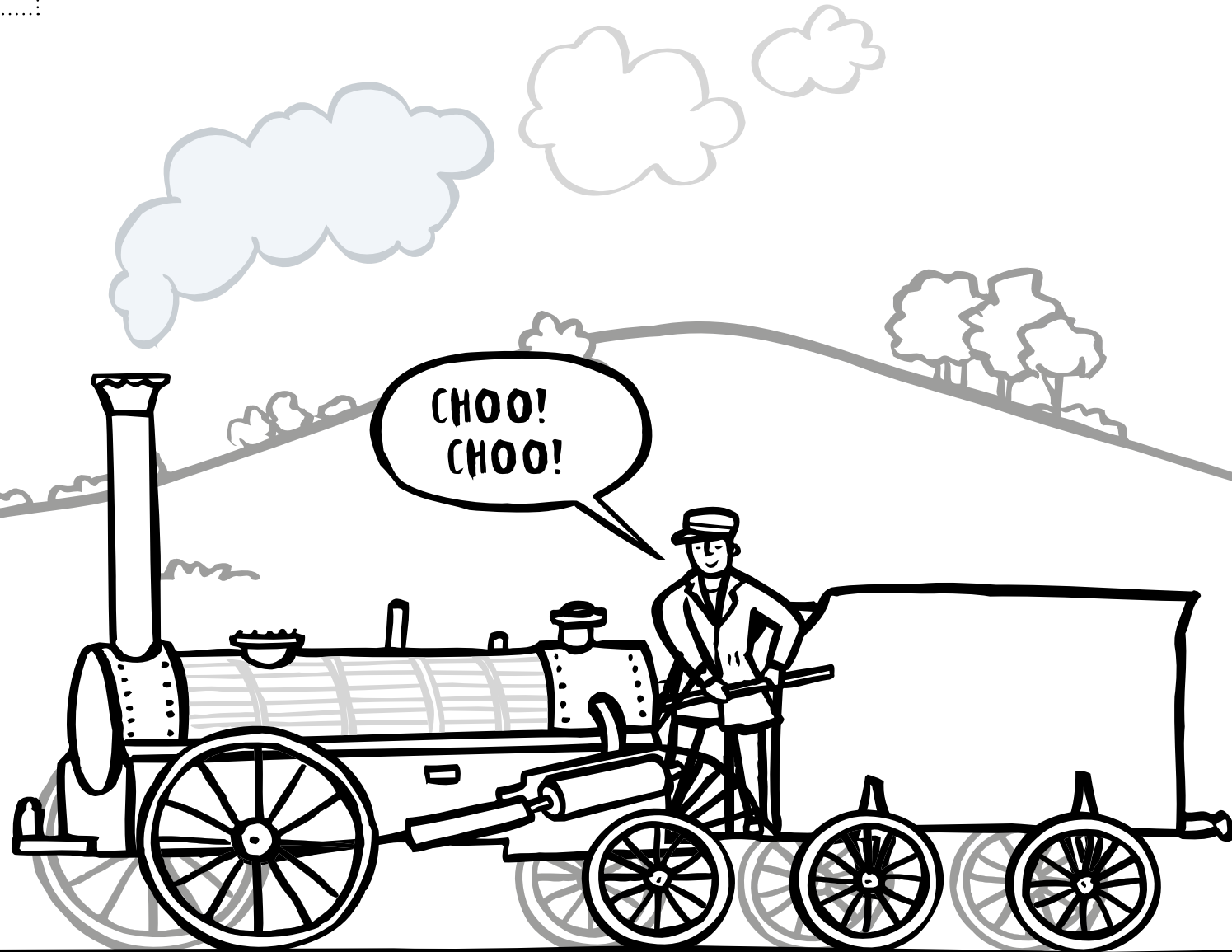
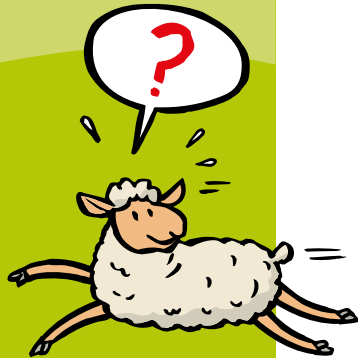


Fill this scene with the animals from the stickers page.

# UNITED KINGDOM

STICK THE  
BRITISH  
FLAG HERE

The world's first public railway to use steam locomotives was officially opened in the United Kingdom on 27 September 1825. Its first line connected collieries near Shildon with Stockton-on-Tees and Darlington, just 25 miles. Only 10 years later this wonderful invention connected places and transported people and goods thousands of miles all over the world.

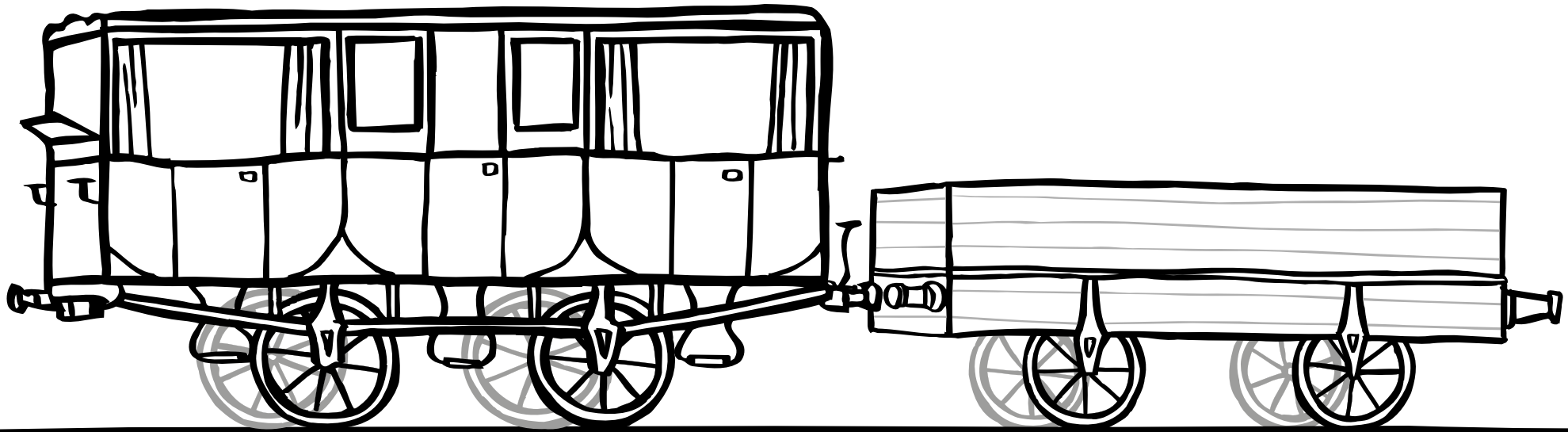
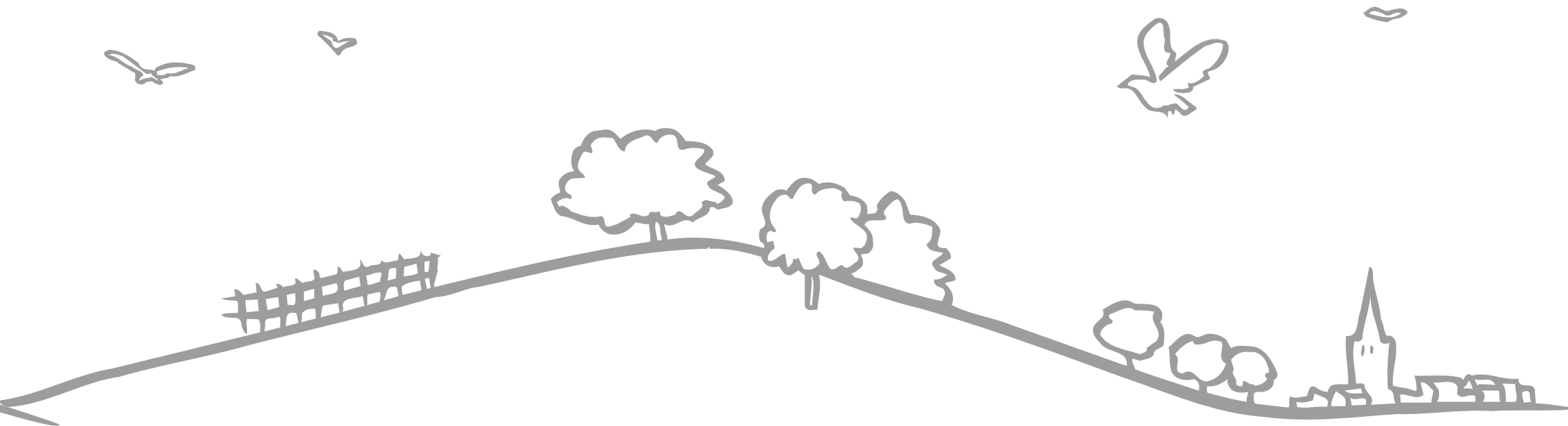


LOCOMOTIVE

COAL TENDER



Draw goods and passengers in the carriages.



PASSENGER CARRIAGE

GOODS CARRIAGE

